

# Installation Instructions

Eibach Inc. 264 Mariah Circle Corona, CA 92879  
USA Tech Support 800-507-2338 ext. 114



## ANTI-ROLL KIT: E40-34-001-01-10

**Vehicle** 24+ INEOS GRENADIER

**Notes** 2-WAY ADJUSTABLE FRONT SWAY BAR

### Kit Contents

| Description    | Part Number       | Quantity |
|----------------|-------------------|----------|
| FRONT SWAY BAR | AS41-34-001-01-FA | 1        |
| HARDWARE KIT   | AK41-34-001-01-FA | 1        |

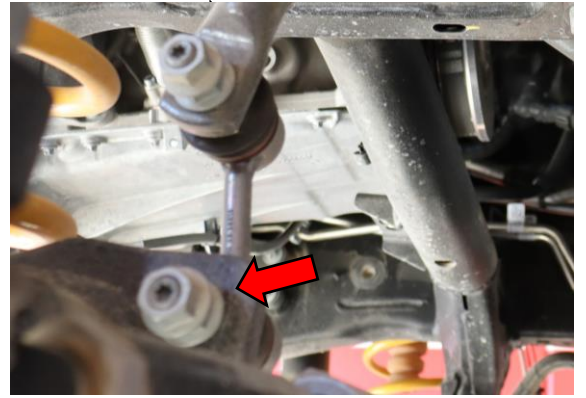
### Installation Notes

#### Read all instructions before beginning installation

- Only qualified mechanics experienced in the installation and removal of suspension components should perform this installation.
- Use of a hoist and screw jack is highly recommended and will substantially reduce installation time.
- Never work on or under a vehicle unless it is properly supported by safety stands and wheels are blocked.
- Never use impact wrenches or impact guns to install or remove shock absorber piston components, shafts and Piston rod nuts.
- All Eibach springs should be installed with the Eibach logo right-side-up.
- After Installation, inspect and adjust the following: Wheel Alignment; tire/wheel fender clearance when using aftermarket wheels or tires; brake line clearance and attachments; anti-lock-brake system sensors.



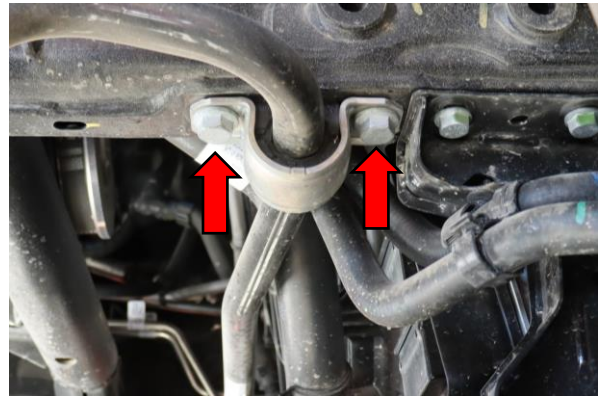
1. Lift and support the vehicle. Remove both front wheels using a 21mm.



2. Use an 18mm to remove the driver side sway bar end link on the axle side of the link.



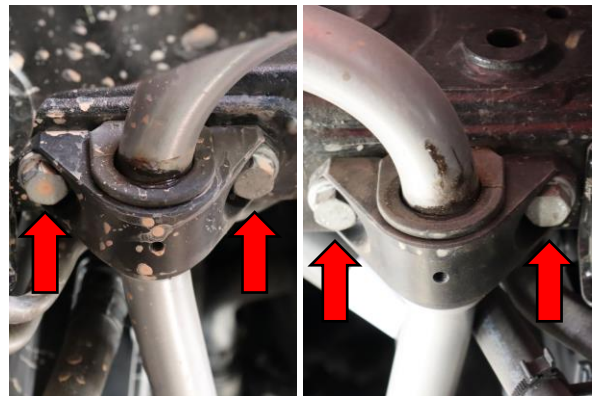
3. Use an 18mm to remove the passenger side sway bar end link on the sway bar side of the end link.



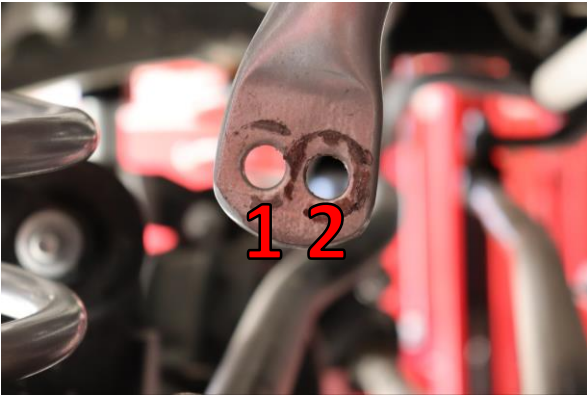
4. Use an 18mm to remove the left and right sway bar brackets. Remove the sway bar from the passenger side of the vehicle. Remove the left sway bar end link from the sway bar.



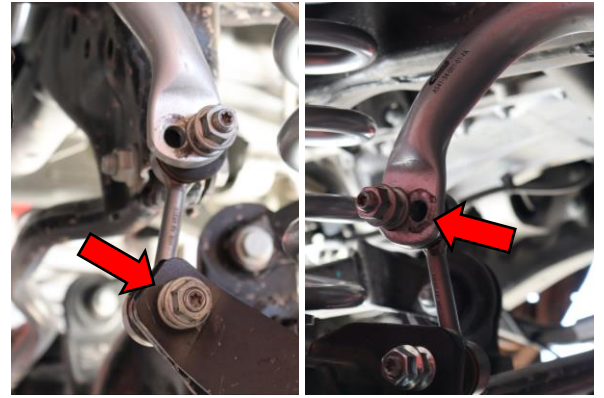
5. Apply supplied grease to the inside of both new sway bar bushings. Install the new sway bar bushings on the Eibach sway bar with the bushings to the outside of the locating tabs. Install the left sway bar end link on the left side of the new sway bar. Tighten to manufacturer specifications.



6. Install new Eibach sway bar brackets over both the left and right sway bar bushings. Install the sway bar in the vehicle from the passenger side. Use an 18mm to secure the sway bar brackets to the frame. Tighten to manufacturer specifications.



7. Select a sway bar setting during sway bar end link install. Setting 1 (rear hole) will provide the softest setting and setting 2 (front hole) will provide the firmest setting.



8. Install the axle end of the left sway bar end link using an 18mm. Install the sway bar end of the right sway bar end link using an 18mm. Tighten to manufacturer specifications.



9. Install the front wheels using a 21mm. Tighten to manufacturer specifications. Lower the vehicle and test drive while listening for any abnormal noises.